



2019-2020 Celebration Dinner

02
27

6pm
The Silo Event Center
110 John Rives Road

PROGRAM

Welcome	Dustin Gilbert & Robin Tabor
Invocation	Tamara Hunter, Aaron McNeil House
Ebonite Impact	Annie Catron
2019 Campaign	Dustin Gilbert & Robin Tabor
100% Employee Participation	Annie Catron
Campaign Division Awards	Division Chairs
Above & Beyond Awards	Dustin Gilbert & Robin Tabor
Beverly Whitfield Award	Brandon Grace, Board Chair
People Helping People Awards	Dustin Gilbert & Robin Tabor
J. William Flowers Award	Jennifer Maddux
Spectacular Raffle	Campaign Cabinet
Closing Remarks	Brandon Grace



UNITED WAY OF THE PENNYRIPLE'S MISSION STATEMENT

Uniting people and resources to improve lives and strengthen communities throughout the Pennyriple.

PEOPLE HELPING PEOPLE AWARDS

Created to honor those organizations in our community which provide outstanding support to the United Way. The honor is given annually to those organizations which conduct outstanding campaigns, reflecting the true spirit of "People Helping People."

Criteria for the awards include an increase in employee giving, volunteer participation and a meaningful corporate gift (where applicable). There are four categories of recognition:

1. Small Firm Award – fewer than 25 employees
2. Medium Firm Award – 25-100 employees
3. Large Firm Award – over 100 employees
4. Overall People Helping People Award - presented to the firm with the most significant contribution to the United Way during the year, regardless of size.

CHAIRMAN'S AWARD

These awards are presented to the companies with the largest total contribution in each division.

100% EMPLOYEE PARTICIPATION

Aaron McNeil House
Atmos Energy – Hopkinsville
Christian County Chamber of Commerce
Christian County Emergency Services
Christian County Judge Executive's Office
Christian County PVA Office
Christian County Treasurer's Office
Dyslexia Association of the Pennyrile
Hopkinsville Christian County Public Library
Hopkinsville Milling Company
Hopkinsville Solid Waste Authority
Kentucky Legal Aid
Pennyrile Children's Advocacy Center
Planters Bank
Saint Luke Free Clinic
United Way of the Pennyrile

J. WILLIAM FLOWERS AWARD

Created by the United Way Board of Directors in 1980 to honor, commemorate and preserve the memory of Mr. J. William Flowers for his tireless dedication and invaluable contribution to the Hopkinsville-Christian County United Way and to this community. This award is presented with appreciation to an outstanding individual who has demonstrated selfless and meritorious service during the United Way campaign. The award is given along with a copy of the Prayer of St. Francis, which typifies the spirit of the true volunteer, and is presented by the prior year's winner.

SPIRIT AWARD

These awards are presented to the companies with the largest percentage increase in giving in each division.

BEVERLY WHITFIELD AWARD

Created to honor the service of Beverly Whitfield to the United Way and the Literacy Council. This award is presented to an outstanding volunteer whose unwavering service and dedication to one of our partner agencies continually help improve our communities and is deserving of recognition.

AWARDS SPONSORED BY



2019 DONORS

Commercial Division

ABC Finance Company, Inc. #1, Hopkinsville ^
ABC Finance Company, Inc. #2, Princeton ^
Advanced Home Medical, Inc. ^
Allison Grace, Home Front Real Estate ^
American Café ^
Arsha's House of Flowers ^
Ash Brunson's All Clean, Inc. ^
AT&T
Bank of Cadiz & Trust Co.
BB&T
Becker Automated Products, LLC ^
Bluegrass Finance Co., Inc. ^
Budweiser of Hopkinsville
Burdock Farms Weddings & Events
Cadiz-Trigg County Tourist & Convention Commission ^
Cayce Farm Supply/C&F Trucking ^
Cayce Mill Supply Co.
Champions Taekwondo Center LLC ^
Chick-fil-A Hopkinsville
Christian Co Chamber of Commerce
Christian Co. Agri-Business Association
Christian Way Farm, LLC ^
Coffman Home Decor, LLC ^
Coleman Auto Parts, Inc. ^
Commonwealth Agri-Energy
Cornerstone Information Systems, Inc.
Cozy Living Interiors & Boutique ^
Dairy Queen Hopkinsville ^
Dairy Queen Elkton ^
Darla's Uptown Salon ^
Davis H. Elliot Company
Davo's Burgers and Fries ^
Denham-Blythe Co Inc
Dulin Design Group, LLC ^
El Bracero - Cadiz ^
Elkton Bank & Trust Co. ^
Embellish Your Home Designs
E-Z Automotive Services, LLC
Ezell, Walton & Tresa
Farm Credit Mid-America ^
FNB Bank
Fifth Third Bank
First Financial Bank
Fortera Credit Union
Four Seasons Catering ^
G & S Embroidery ^
Giles Farms ^
Gracious Me!
Greenearth Recycling ^
Guthrie Hardware ^
Guthrie Main Street



H & R Agri-Power
Hair by Victoria @ Encore ^
Hampton Meat Processing, Inc.
Hancock's Neighborhood Market ^
Herb Hays Furniture ^
His & Hers Cut & Curl ^
Home Builders Association of Hopkinsville ^
HomePlace Mortgage, Inc. ^
Hopkinsville Brewing Company ^
Hopkinsville Monument Company, Inc. ^
Hopkinsville Outdoor Equipment
IBM Corporation
Jim Moss Electric ^
JPM Performance Powersports
KCA Corporation
Ken's Repair ^
Kentucky Moving & Storage Services, Inc. ^
Kentucky Western Truck Lines, Inc. ^
Kroger Company #522
Lester Farms, Inc. ^
Light's Plumbing & Heating ^
Little Caesar's Pizza ^
Main Street Tavern ^
McEnaney Enterprises, LLC ^
McGee Pest Control, Inc.
Michael Fears, Duboday Enterprises, LLC ^
Model Cleaners ^
Mr. Mulch, Inc./Mohon Tractor Sales & Service ^
Papa John's Pizza ^
Pennyrile Ford
Pieces of Heaven
Place 1 Liquors ^
Planters Bank
PORTA GRACE Manufacturing
Princeton Lumber Company, Inc. ^
Riverbend Farms ^
Ruffled Willow ^
Scentsy-Sharon Chilton ^
Sisk Auto Mall
Sisk Nissan
Solly Office Supplies, Inc.
Southern Springs Catering & Event Center LLC ^
Southern States Cooperative, Inc. ^
Special Occasions Plus Bridal

Sprint Print
Staton`s Art & Framing ^
Superlawn & Garden, LLC / DBA ^
Taco John`s of Princeton ^
The Bloomery ^
The Corner Coffeehouse ^
The Farmer`s Daughter, LLC
The Silo Event Center ^
The UPS Store ^
The Village Restaurant ^
Tool Tec ^
Treasures Remembered Florist and Greenhouse ^
United Southern Bank
UPS
US Bank
Walmart Distribution Center 6066
West Side Body Shop, LLC
Westate Construction, Inc. ^
WF Ware Company, Inc. ^
Williams Advertising ^
Workman`s Auto Glass ^

Education Division

CCPS Alternative School
CCPS Christian County High School
CCPS Christian County Middle School
CCPS Central Office
CCPS Crofton Elementary School
CCPS Cumberland Hall
CCPS Day Treatment Center
CCPS Freedom Elementary
CCPS Gateway Academy to Innovation
CCPS Hopkinsville High School
CCPS Hopkinsville Middle School
CCPS Indian Hills Elementary
CCPS Martin Luther King Elementary
CCPS Millbrooke Elementary
CCPS Pembroke Elementary
CCPS Sinking Fork Elementary
CCPS South Christian Elementary
Hopkinsville Community College, KCTCS
University Heights Academy

Government Division

Cadiz-Trigg Co. Industrial Development Authority
Christian Co Attorney`s Office
Christian Co Clerk
Christian Co Emergency Management
Christian Co Jail
Christian Co Judge Ex. Office
Christian Co PVA
Christian Co Sheriff`s Dept.
Christian Co Treasurer`s Office
Christian County Circuit Court Clerk
City of Hopkinsville Admin Dept.
City of Hopkinsville Fire Department

City of Hopkinsville Police Department
City of Hopkinsville Public Works Dept.
Community & Development Services
Downtown Renaissance District
Hopkinsville Solid Waste Enterprise
Housing Authority of Hopkinsville
Hopkinsville Water Environment Authority
KY Employee Charitable Campaign
Pennyrile Allied Community Services
Pennyrile Area Development District, Inc.
South Western KY Economic Development Council

Industrial Division:

Amfine
Atmos Energy - Hopkinsville
Atmos Energy - Princeton
Brazeway, Inc.
Comefri USA, Inc.
Continental Mills
Flynn Enterprises, Inc.
Hopkinsville Electric System and EnergyNet
Hopkinsville Elevator Co., Inc.
Hopkinsville Milling Co.
Hydro-Gear
Kentucky New Era
Lee Masonry Products, Inc.
LG&E and KU Energy LLC
Metalsa United States Hopkinsville Plant
MSSC/Arvin Meritor, Inc.
Pennyrile Electric
Plymouth Engineered Shapes
Riken Americas Corporation
Riken Elastomers Corporation
Rogers Group
Siemer Milling Company
Turner Industries Group
Vectren / ESG Energy
Wabash National

Professional Division

Aaron McNeil House/Crisis Relief
Advantage Realtors ^
Alpha Kappa Alpha Sorority, Inc.
Angela Keeling, Shelter Insurance ^
Baird Financial Services
Bastin Optometric Clinic
Becky Johnson, Town & Country Realty ^
Bolinger Real Estate & Auction ^
Bottoms, Dr. Jason & Lisa ^
Boys & Girls Club
Brianna Craft, Town & Country Realty ^
Calhoun & Company, LLC., CPAs
Carla Bell, Town & Country Realty ^
Center of Insurance/Hopkinsville

Cobb, Ray ^
Cotthoff, David L.
Cotthoff, Michael ~
Crenshaw, Julia ~
Debbie Vier-Poe, West KY Realty Team ^
Diuguid, Ray & Camilla ^
Duguid, Gentry & Associates
Dyslexia Association of the Pennyryle
Edward Jones - Financial Adviser Robbie Sipes ^
Edward Jones - Financial Adviser Jake Williams ^
Edward Jones - Financial Adviser: Blake Nephew ^
Edward Jones - Financial Adviser: Klent Starks ^
English Lacy & Company PLLC
Etta Walker Flegle, Real Estate Southern Style ^
Farless Realty ^
Farm Bureau Insurance - Gary Keeton ^
First United Methodist Church
Foster, Soyars & Associates
Gamble Funeral Home ^
Goodwin Funeral Home
Guier, Lester B. ~
H B Quinn, Attorney
Harbor Insurance Agency ^
Harbor Insurance, Adam Murphy ^
Harbor Insurance, Sherry K Finley ^
Harbor Insurance, Tim Murphy ^
Hearing Services of Kentucky, Inc.
Hicks and Demps
Higgins Insurance
Holly Hampton/ EXIT One Real Estate Metronet ^
Hopkinsville Christian Co Public Library
Hopkinsville Family YMCA
Hopkinsville Hearing Center ^
Hopkinsville Junior Auxiliary, Inc.
Hopkinsville Rotary Club
Hughart, Beard and Giles Funeral Homes, Inc.
Ison & Cavanah, LLP
James E. Bruce, Attorney at Law
Janie Ezell, Town & Country Realty ^
Jennie Stuart Health
Julia Ussery, Town & Country Realty ^
Kaleb A Greene Family Dentistry PLLC
Karen Chiles - Payne Real Estate ^
Kem Wealth Management
Kentucky Legal Aid
King's Funeral Home, Inc. ^
Kirkman Real Estate ^
Lackey, Jack & Jacwyn ~
Lake Barkley Insurance Agency ^
Larry Gillette, Advantage Realtors ^
Leadership Hopkinsville Christian County
Lee M Harton PLLC ~
Long, MD, W. Lawrence ^
Maddux-Fuqua-Hinton Funeral Home ^
Mansfield Animal Hospital
Missy Craft - Town & Country Realty ^

Pennyryle Children's Advocacy Center
Pennyryle Family Dentistry PLLC ^
Pennyryle R C & D Area Council
Pennyryle Radiology
Pennyroyal Arts Council ^
Pennyroyal Center
Pennyroyal Hospice
Pioneers` Inc. ^
Rachel Smith - Advantage Realtors ^
Richardson, Michael A. ~
Ross, Charles D. ~
Rowlett, Bill & Marilyn
Sanctuary, Inc.
Sandifer Property Management & Leasing ^
Save More Drugs
Shafer, Dr. Patrick ^
Soyars, John T.
St. Luke Free Clinic
State Farm Insurance - Tom Bell
State Farm Insurance - Michael Venable
State Farm - Steve Crisp ^
Stitt, Dr. John C. ^~
Summers Optical, Inc. ^
The Community Foundation of Middle TN
The Salvation Army
Todd, Judy & Bill ^
Tonja West, Home Front Real Estate, LLC ^
Town & Country Real Estate ^
Trace Industries
Underwood, Stephen E.
United Way of the Pennyryle
Vance, Dr. Joseph M. ^
WBW Engineering Inc. ^
Weathers Drug ^
Western KY SHRM
White, Lee ~
Woodall Agency Inc ^
York, Neel & Associates, LLP

Residential Division

Bruce, Janice ~
Byars, George & Sara ~
Campbell, Elton W.
Carroll, Leslie & Brittany ~
Cavanah, Sandy
Cayce, Mike & Helen ~
Chapman, Jimmy and Lisa
Chaudoin, Jr, William J. ~
Clark, Boyd & Patsy ~
Clark, Lynn T.
Colley, Kenneth D. ~
Cornell, Louise P. ~
Cotthoff, Vickie
Crenshaw, Helen
DeAngelis, Claire H.
Diuguid, Otis M.

Drury, Jim ~
 Evans, Ruth M.
 Ferguson, Jr., Hill ~
 Francis, Larry & Dawnelle
 Freer, Anita ~
 Garnett, Lindsay
 Glover, Eston & Jo ~
 Grace, Joette
 Graham, Brenda Orten ~
 Guffey, Danny & Anna Caryl ~
 Gustafson, Darrell L. ~
 Haddock, Gary & Carolyn
 Hampton, Ernie ~
 Harton, Mary Ann
 Hayes, Robert L.
 Higgins, Edward H. ~
 Keller, Roy & Christi
 Kemp, Dan & Henrietta ~
 Kempa, Dennis & Melissa ~
 Langhi, Michael H. ~
 Lature, Ruth F. ~
 Lawson, Virginia D.
 Ledford, Linda
 Lindsey, Sammy ~
 Mabry, Donald R. ~
 Maddux, Fannie Louise
 Manns, Claudette H.
 McKinney, Kay & Neal Sellars ~
 Nash, Barbara
 Netz, Genevieve L.
 Nichol, William H. ~
 Noland, Evelyn
 Piffko, Petra
 Presler, John
 Price, Thomas
 Quitter, Mike
 Rechter, Richard & Suki ~
 Roeder, Tara G.
 Scott, Wally
 Self, Ben ~
 Shultz, Myra
 Sisk, Albert W. ~
 Sivley, Robert B.
 Sowell, Vernell
 Steiner, C. Thomas & Cheryl ~
 Thomas, Bernadette & Jerry
 Turner, Charles & Diane Croney-Turner ~
 Vaughan, Kathy C.
 Waldron, Jr., Tommy W.
 White, Marla & Hollis ~
 Whitty, Neldon ~
 Young, Ann T.



* Corporate Gift only
 ^ Small Business Week participant
 ~ Latham Society member

CAMPAIGN CABINET

Campaign Co-Chairs
Latham Society
Education Division
Commercial Division
Professional Division
Industrial Division
Government Division

Dustin Gilbert & Robin Tabor
Lana Bastin
Sara Sweeney
Sandy Grogan & Danielle Grace
Leslie Cansler & Kim Graham
Julie Davis & Martha Argotte
Bill Pyle & Cathy Osteen

Special Thanks To:

Campaign Video
Logo Design
Co-Chairs Attire
Hostesses
Elvis Impersonators
Waiters
Music

Hunter Ezell
Sponsored by Bank of Cadiz
Stephanie Jones
Special Occasions Plus
Anna Maddux, Megan Grace,
Mary Campbell, & Audrey Stewart
Jonah Reed & Thomas West
Bryce Hanson, Ellie Colburn, Ella
Falco, Will Futrull, & Riley
Robinson
Jeff Calhoun



FUNDED PARTNERS

Aaron McNeil House
American Red Cross
Armed Services YMCA
Boys and Girls Club
Bright Life Farms
Christian County Literacy Council
Christian County Rescue Team
Christian County Youth Advisory
Dyslexia Association of the Pennyriple
Hopkinsville Family YMCA Pryme Tyme

BOARD OF DIRECTORS

Kevin Atwood
Rita Berman
Holly Boggess
Lesley Cansler
Deanna Coker, Treasurer
Julia Crenshaw, Past Chair
Nikki Durham
Dustin Gilbert
Brandon Grace, Chair
Sandy Grogan
Dan Kemp
Melissa Kempa
Tiffany Massey
Stephanie McQueen, Chair Elect
Joey Medeiros
Don Ruddy
Cindy Stagner
Robbie Sipes
Melissa Spurr
Sara Sweeney
Laura Thomas
Jayme Tubbs
Alissa Young

STAFF

Annie Catron, President/CEO
Barb Duvall, Director of Finance
Suzanne Arnold, Administrative Asst.

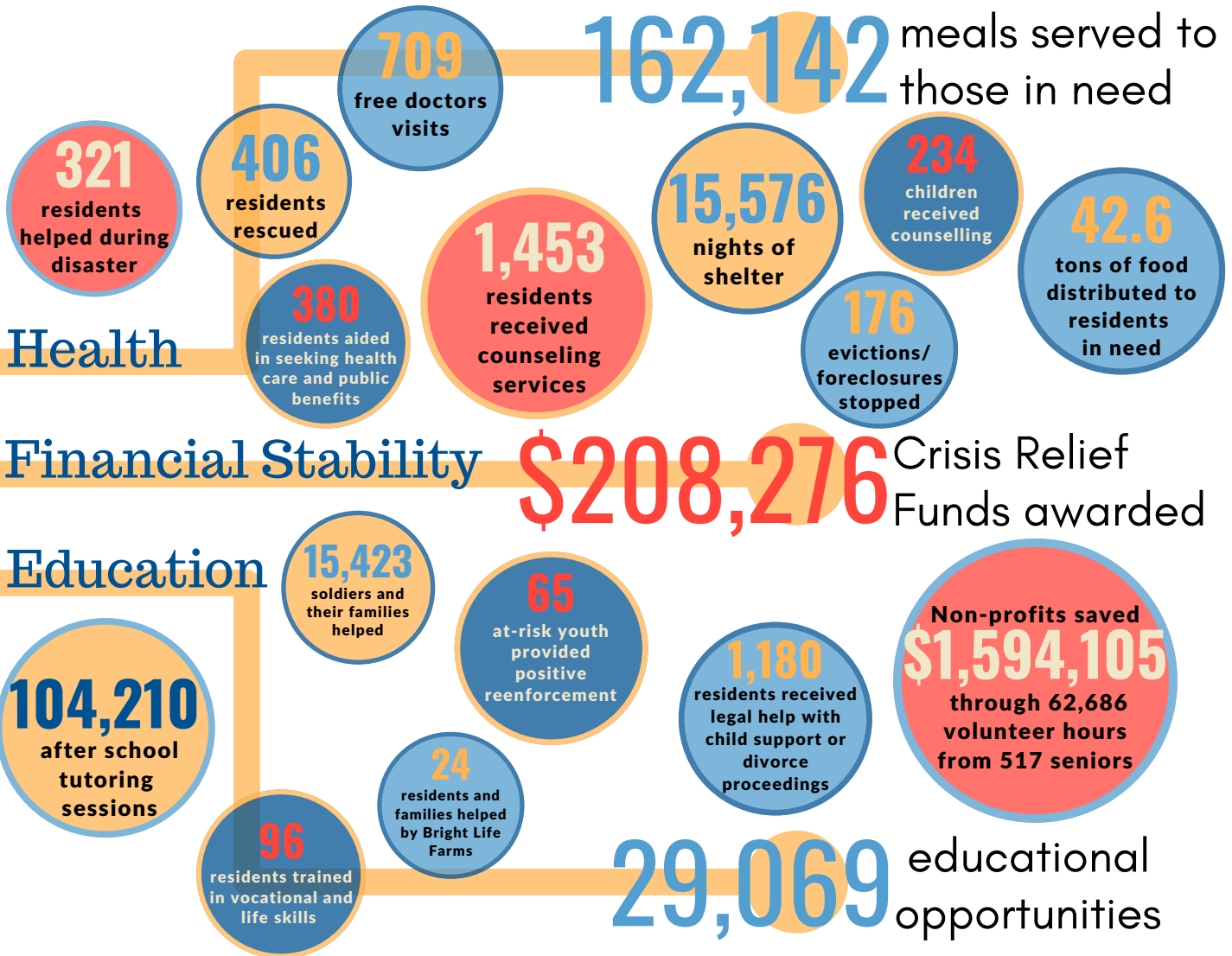
Imagination Library
Kentucky Legal Aid
Meals on Wheels
Pennyriple Children's Advocacy Center
Pennyroyal Hospice
Retired Senior Volunteer Program
Salvation Army
Sanctuary, Inc.
St. Luke Free Clinic
Trace Industries

74,355
residents helped
by United Way

2018 IMPACT



United Way
of the Pennyrile



Help us make an even bigger impact!

LIVE UNITED



UNITED WAY OF THE PENNYRILE

DINNER SPONSORS



JennieStuart

Health

